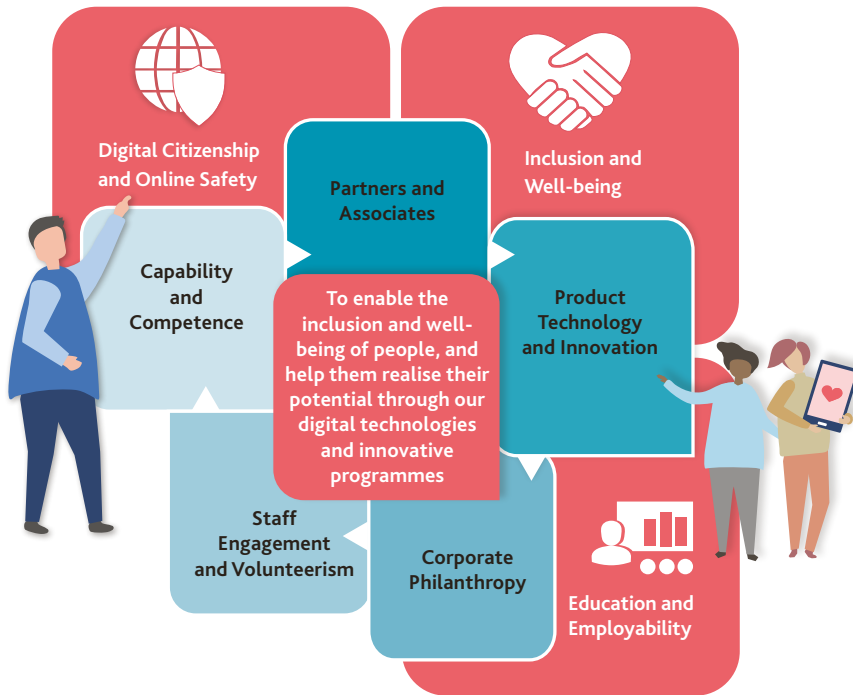


# 05 Community

## The Most Connected Communities

The Singtel Group is committed to being a responsible corporate citizen in all the markets where we operate, driving positive and sustainable change for our communities.

Figure 1:  
Singtel Group's Strategic Community Investment Framework



### OUR APPROACH

The Singtel Group supports the advancement of the communities we operate, guided by our community strategy and investment framework (see Figure 1). We can play a significant role in enabling the progress, development and inclusion of vulnerable segments of society. We aim to make a positive and sustainable impact in society through the skills and core competencies in our collective resources of partnerships, programmes and staff engagement initiatives.

In Singapore, our community programmes and approach are aligned with the National Council of Social Service (NCSS) Strategic Thrusts 2017-2021, which have been co-developed with the people, private and public (3P) sectors, to work towards a shared vision where every person is empowered to live with dignity in a caring and inclusive society. We are one of the few key private sector representatives on the NCSS strategic review committee which aims to foster collaboration and knowledge sharing across sectors.

We adopt a similar people-centred approach in Australia. We connect groups and individuals to opportunities, empower them and drive impactful change with emphasis on youth and disadvantaged groups. Our community strategy contributes towards the various UN SDGs: 3, 4, 8, 9, 10 and 11.

